



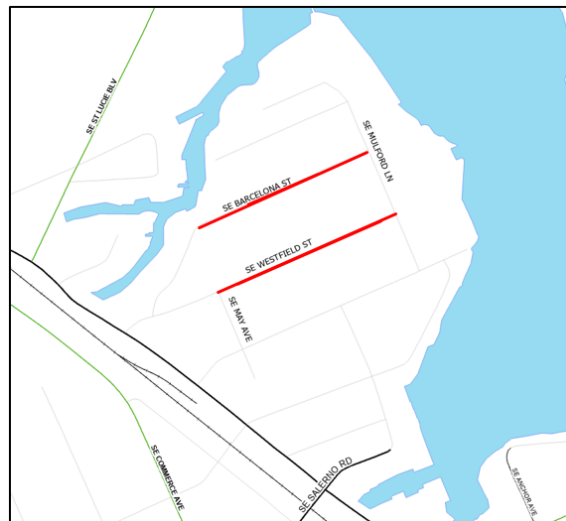
FOR IMMEDIATE RELEASE

## SE Westfield Street & SE Barcelona Street – Lane and Sidewalk Closures

On Tuesday, July 8<sup>th</sup>, Ferreira Construction on behalf of the Martin County Capital Projects Division will begin underground drainage work on SW Westfield Street and SE Barcelona Street. This work will require lane and sidewalk closures between 8:30 a.m. and 4:00 p.m. on SE Westfield Street between SE May Avenue to SE Mulford Lane and SE Barcelona Street between SE Westfield Street and SE May Avenue. The work is anticipated to be complete by July 25<sup>th</sup>.

Motorists, pedestrians, and cyclists are encouraged to follow detours, exercise caution, and expect delays.

The Martin County Road Conditions Map is available via any mobile device or desktop with internet access. To view all county lane/road closures, visit: <http://conezone.martin.fl.us>.



(MP/PWD)

Residents are encouraged to visit [www.martin.fl.us](http://www.martin.fl.us), Martin County's online resource for services, news and information, and connect with us on social media. Follow us on [Twitter](#), [Facebook](#) and [Instagram](#) and subscribe to our [YouTube Channel](#).

###

Martha Ann Kneiss | Office of Communications  
Office: 772-463-2810 | Mobile: 772-214-2790 | [mkneiss@martin.fl.us](mailto:mkneiss@martin.fl.us)

Charly Perez | Public Works Department  
772-320-3162 | [cperez@martin.fl.us](mailto:cperez@martin.fl.us)

### About the Martin County Board of County Commissioners

The five-member Board of County Commissioners is the legislative governing body of Martin County. Each Commissioner is elected to a four-year term by voters in the countywide area. Chapter 125.01 of the Florida Statutes establishes the specific duties and powers of the Board of County Commissioners. Exercising their legislative powers, the County Commission adopts ordinances (local laws) and resolutions to establish policies and programs to protect the health, safety and general welfare of Martin County residents.

This document may be reproduced upon request in an alternative format by contacting the County ADA Coordinator (772) 320-3131, the County Administration Office (772) 288-5400, Florida Relay 711, or by completing our accessibility feedback form at [www.martin.fl.us/accessibility-feedback](http://www.martin.fl.us/accessibility-feedback)