



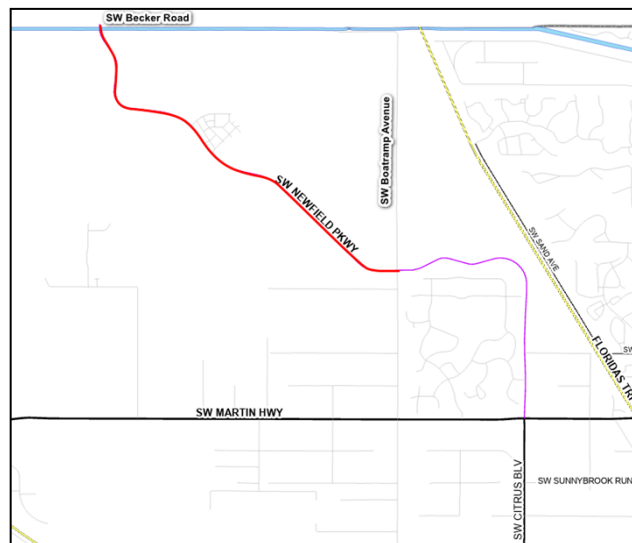
FOR IMMEDIATE RELEASE

SW Newfield Parkway – Nighttime Road Closure

On Tuesday, June 17th, Trans Florida Development will begin road paving on SW Newfield Parkway. This work will require lane and sidewalk closures between 9:00 p.m. and 5:00 a.m. on SW Newfield Parkway from SW Becker Road to SW Boat Ramp Avenue. The work is anticipated to be complete by June 20th.

Motorists, pedestrians, and cyclists are encouraged to follow detours, exercise caution, and expect delays.

The Martin County Road Conditions Map is available via any mobile device or desktop with internet access. To view all county lane/road closures, visit: <http://conezone.martin.fl.us>.



(MP/PWD)

Residents are encouraged to visit www.martin.fl.us, Martin County's online resource for services, news and information, and connect with us on social media. Follow us on [Twitter](#), [Facebook](#) and [Instagram](#) and subscribe to our [YouTube Channel](#).

###

Martha Ann Kneiss | Office of Communications
Office: 772-463-2810 | Mobile: 772-214-2790 | mkneiss@martin.fl.us

Carol Higgins | Public Works Department
772-288-5462 | chiggins@martin.fl.us

About the Martin County Board of County Commissioners

The five-member Board of County Commissioners is the legislative governing body of Martin County. Each Commissioner is elected to a four-year term by voters in the countywide area. Chapter 125.01 of the Florida Statutes establishes the specific duties and powers of the Board of County Commissioners. Exercising their legislative powers, the County Commission adopts ordinances (local laws) and resolutions to establish policies and programs to protect the health, safety and general welfare of Martin County residents.

This document may be reproduced upon request in an alternative format by contacting the County ADA Coordinator (772) 320-3131, the County Administration Office (772) 288-5400, Florida Relay 711, or by completing our accessibility feedback form at www.martin.fl.us/accessibility-feedback.