



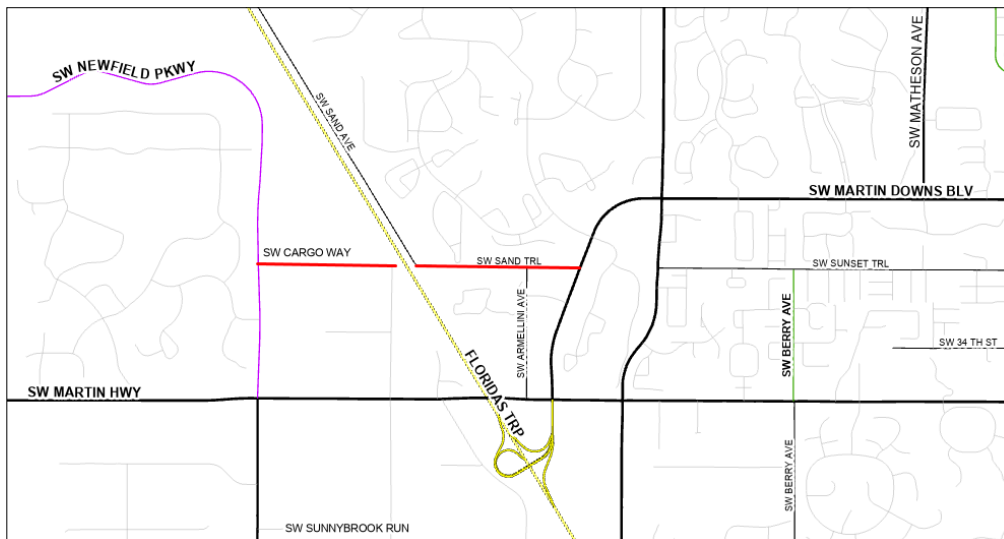
FOR IMMEDIATE RELEASE

## SW Cargo Way & SW Sand Trail – Lane and Sidewalk Closures

On Tuesday, March 11<sup>th</sup>, GenXC Construction will begin underground utility work on SW Cargo Way & SW Sand Trail. This work will require lane and sidewalk closures between 8:30 a.m. and 4:00 p.m. on SW Cargo Way & SW Sand Trail from SW Newfield Parkway to SW Martin Downs Boulevard. The work is anticipated to be complete by April 30<sup>th</sup>.

Motorists, pedestrians, and cyclists are encouraged to follow detours, exercise caution, and expect delays.

The Martin County Road Conditions Map is available via any mobile device or desktop with internet access. To view all county lane/road closures, visit: <http://conezone.martin.fl.us>.



(MP/PWD)

Residents are encouraged to visit [www.martin.fl.us](http://www.martin.fl.us), Martin County's online resource for services, news and information, and connect with us on social media. Follow us on [Twitter](#), [Facebook](#) and [Instagram](#) and subscribe to our [YouTube Channel](#).

###

Martha Ann Kneiss | Office of Communications  
Office: 772-463-2810 | Mobile: 772-214-2790 | [mkneiss@martin.fl.us](mailto:mkneiss@martin.fl.us)

Carol Higgins | Public Works Department  
772-288-5462 | [chiggins@martin.fl.us](mailto:chiggins@martin.fl.us)

### About the Martin County Board of County Commissioners

The five-member Board of County Commissioners is the legislative governing body of Martin County. Each Commissioner is elected to a four-year term by voters in the countywide area. Chapter 125.01 of the Florida Statutes establishes the specific duties and powers of the Board of County Commissioners. Exercising their legislative powers, the County Commission adopts ordinances (local laws) and resolutions to establish policies and programs to protect the health, safety and general welfare of Martin County residents.

This document may be reproduced upon request in an alternative format by contacting the County ADA Coordinator (772) 320-3131, the County Administration Office (772) 288-5400, Florida Relay 711, or by completing our accessibility feedback form at [www.martin.fl.us/accessibility-feedback](http://www.martin.fl.us/accessibility-feedback)