

FOR IMMEDIATE RELEASE

## SW Dyer Point Road – Intermittent Lane Closure

On Thursday, October 6<sup>th</sup>, Pike Electric on behalf of Florida Power and Light will begin utility pole installation and the transferring of existing utilities on SW Dyer Point Road. This will necessitate intermittent lane closures on SW Dyer Point Road from SW Riverway Boulevard to SW 5<sup>th</sup> Terrace. This work is anticipated to be complete by November 24<sup>th</sup>.

Motorists are encouraged to follow detours, exercise caution, and expect delays.

The Martin County Road Conditions Map is available via any mobile device or desktop with internet access. To view all county lane/road closures, visit: <http://conezone.martin.fl.us>.



(MP/PWD)

Residents are encouraged to visit [www.martin.fl.us](http://www.martin.fl.us), Martin County's online resource for services, news and information, and connect with us on social media. Follow us on [Twitter](#), [Facebook](#) and [Instagram](#) and subscribe to our [YouTube Channel](#).

###

Martha Ann Kneiss | Office of Communications  
Office: 772-463-2810 | Mobile: 772-214-2790 | [mkneiss@martin.fl.us](mailto:mkneiss@martin.fl.us)

Susan Kingsley | Public Works Department  
772-288-5459 | [skingsley@martin.fl.us](mailto:skingsley@martin.fl.us)

### About the Martin County Board of County Commissioners

The five-member Board of County Commissioners is the legislative governing body of Martin County. Each Commissioner is elected to a four-year term by voters in the countywide area. Chapter 125.01 of the Florida Statutes establishes the specific duties and powers of the Board of County Commissioners. Exercising their legislative powers, the County Commission adopts ordinances (local laws) and resolutions to establish policies and programs to protect the health, safety and general welfare of Martin County residents.

This document may be reproduced upon request in an alternative format by contacting the County ADA Coordinator (772) 320-3131, the County Administration Office (772) 288-5400, Florida Relay 711, or by completing our accessibility feedback form at [www.martin.fl.us/accessibility-feedback](http://www.martin.fl.us/accessibility-feedback).



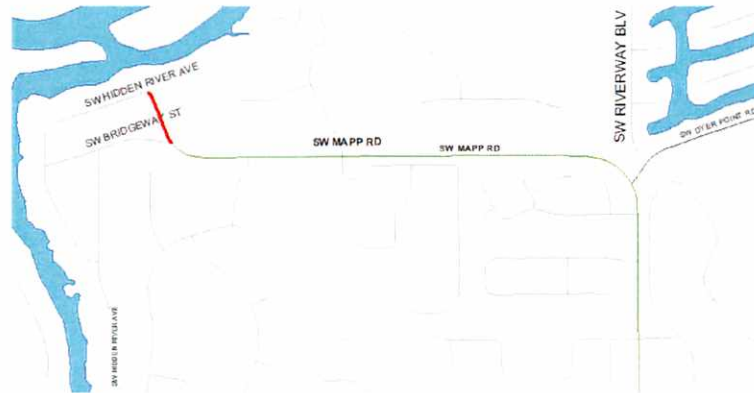
FOR IMMEDIATE RELEASE

## SW Mapp Road – Lane and Sidewalk Closure

On Thursday, October 6<sup>th</sup>, Pike Electric on behalf of Florida Power and Light will begin utility pole installation and the transferring of existing utilities on SW Mapp Road. This will necessitate lane and sidewalk closures on SW Mapp Road from SW Hidden River Avenue to SW Bridgeway Street. This work is anticipated to be complete by November 24<sup>th</sup>.

Motorists are encouraged to follow detours, exercise caution, and expect delays.

The Martin County Road Conditions Map is available via any mobile device or desktop with internet access. To view all county lane/road closures, visit: <http://conezone.martin.fl.us>.



(MP/PWD)

Residents are encouraged to visit [www.martin.fl.us](http://www.martin.fl.us), Martin County's online resource for services, news and information, and connect with us on social media. Follow us on [Twitter](#), [Facebook](#) and [Instagram](#) and subscribe to our [YouTube Channel](#).

###

Martha Ann Kneiss | Office of Communications  
Office: 772-463-2810 | Mobile: 772-214-2790 | [mkneiss@martin.fl.us](mailto:mkneiss@martin.fl.us)

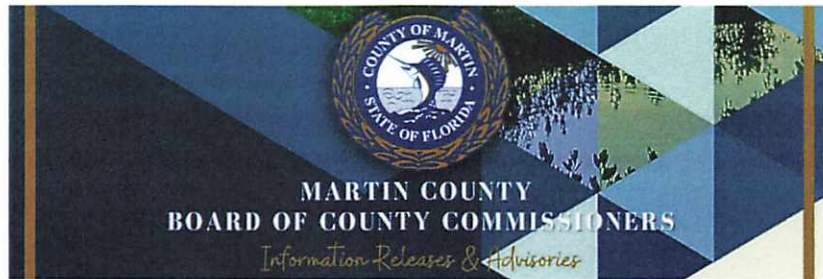
Susan Kingsley | Public Works Department  
772-288-5459 | [skingsley@martin.fl.us](mailto:skingsley@martin.fl.us)

### About the Martin County Board of County Commissioners

The five-member Board of County Commissioners is the legislative governing body of Martin County. Each Commissioner is elected to a four-year term by voters in the countywide area. Chapter 125.01 of the Florida Statutes establishes the specific duties and powers of the Board of County Commissioners. Exercising their legislative powers, the County Commission adopts ordinances (local laws) and resolutions to establish policies and programs to protect the health, safety and general welfare of Martin County residents.

This document may be reproduced upon request in an alternative format by contacting the County ADA Coordinator (772) 320-3131, the County Administration Office (772) 288-5400, Florida Relay 711, or by completing our accessibility feedback form at [www.martin.fl.us/accessibility-feedback](http://www.martin.fl.us/accessibility-feedback).





FOR IMMEDIATE RELEASE

## SW Dyer Point Road – Intermittent Lane Closure

On Thursday, October 6<sup>th</sup>, Pike Electric on behalf of Florida Power and Light will begin utility pole installation and the transferring of existing utilities on SW Dyer Point Road. This will necessitate intermittent lane closures on SW Dyer Point Road from SW Riverway Boulevard to SW 5<sup>th</sup> Terrace. This work is anticipated to be complete by November 24<sup>th</sup>.

Motorists are encouraged to follow detours, exercise caution, and expect delays.

The Martin County Road Conditions Map is available via any mobile device or desktop with internet access. To view all county lane/road closures, visit: <http://conezone.martin.fl.us>.



(MP/PWD)

Residents are encouraged to visit [www.martin.fl.us](http://www.martin.fl.us), Martin County's online resource for services, news and information, and connect with us on social media. Follow us on [Twitter](#), [Facebook](#) and [Instagram](#) and subscribe to our [YouTube Channel](#).

###

Martha Ann Kneiss | Office of Communications  
Office: 772-463-2810 | Mobile: 772-214-2790 | [mkneiss@martin.fl.us](mailto:mkneiss@martin.fl.us)

Susan Kingsley | Public Works Department  
772-288-5459 | [skingsley@martin.fl.us](mailto:skingsley@martin.fl.us)

### About the Martin County Board of County Commissioners

The five-member Board of County Commissioners is the legislative governing body of Martin County. Each Commissioner is elected to a four-year term by voters in the countywide area. Chapter 125.01 of the Florida Statutes establishes the specific duties and powers of the Board of County Commissioners. Exercising their legislative powers, the County Commission adopts ordinances (local laws) and resolutions to establish policies and programs to protect the health, safety and general welfare of Martin County residents.

This document may be reproduced upon request in an alternative format by contacting the County ADA Coordinator (772) 320-3131, the County Administration Office (772) 288-5400, Florida Relay 711, or by completing our accessibility feedback form at [www.martin.fl.us/accessibility-feedback](http://www.martin.fl.us/accessibility-feedback).



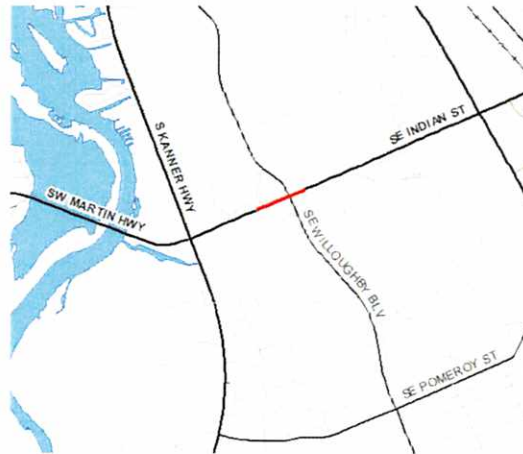
FOR IMMEDIATE RELEASE

## SE Indian Street – Lane & Sidewalk Closures

On Tuesday, October 18<sup>th</sup>, Broadband Technical Resources on behalf of Comcast will begin underground utility work on SE Indian Street. This will necessitate a southern sidewalk closure on SE Indian Street from SE Gatehouse Circle Entry S to SE Aster Lane. This work is anticipated to be complete by October 25<sup>th</sup>.

Motorists are encouraged to follow detours, exercise caution, and expect delays.

The Martin County Road Conditions Map is available via any mobile device or desktop with internet access. To view all county lane/road closures, visit: <http://conezone.martin.fl.us>.



(MP/PWD)

Residents are encouraged to visit [www.martin.fl.us](http://www.martin.fl.us), Martin County's online resource for services, news and information, and connect with us on social media. Follow us on [Twitter](#), [Facebook](#) and [Instagram](#) and subscribe to our [YouTube Channel](#).

###

Martha Ann Kneiss | Office of Communications  
Office: 772-463-2810 | Mobile: 772-214-2790 | [mkneiss@martin.fl.us](mailto:mkneiss@martin.fl.us)

Susan Kingsley | Public Works Department  
772-288-5459 | [skingsley@martin.fl.us](mailto:skingsley@martin.fl.us)

### About the Martin County Board of County Commissioners

The five-member Board of County Commissioners is the legislative governing body of Martin County. Each Commissioner is elected to a four-year term by voters in the countywide area. Chapter 125.01 of the Florida Statutes establishes the specific duties and powers of the Board of County Commissioners. Exercising their legislative powers, the County Commission adopts ordinances (local laws) and resolutions to establish policies and programs to protect the health, safety and general welfare of Martin County residents.

This document may be reproduced upon request in an alternative format by contacting the County ADA Coordinator (772) 320-3131, the County Administration Office (772) 288-5400, Florida Relay 711, or by completing our accessibility feedback form at [www.martin.fl.us/accessibility-feedback](http://www.martin.fl.us/accessibility-feedback).





FOR IMMEDIATE RELEASE

## SE Island Way – Lane and Sidewalk Closure

On Wednesday, October 26<sup>th</sup>, Pike Electric on behalf of Florida Power and Light will begin utility work on SE Island Way. This will necessitate a lane and sidewalk closure on SE Island Way between SE Jupiter River Road and SE Tortuga Court. This work is anticipated to be complete by November 23<sup>rd</sup>.

Motorists are encouraged to follow detours, exercise caution, and expect delays.

The Martin County Road Conditions Map is available via any mobile device or desktop with internet access. To view all county lane/road closures, visit: <http://conezone.martin.fl.us>.



(MP/PWD)

Residents are encouraged to visit [www.martin.fl.us](http://www.martin.fl.us), Martin County's online resource for services, news and information, and connect with us on social media. Follow us on [Twitter](#), [Facebook](#) and [Instagram](#) and subscribe to our [YouTube Channel](#).

###

Martha Ann Kneiss | Office of Communications  
Office: 772-463-2810 | Mobile: 772-214-2790 | [mkneiss@martin.fl.us](mailto:mkneiss@martin.fl.us)

Susan Kingsley | Public Works Department  
772-288-5459 | [skingsley@martin.fl.us](mailto:skingsley@martin.fl.us)

### About the Martin County Board of County Commissioners

The five-member Board of County Commissioners is the legislative governing body of Martin County. Each Commissioner is elected to a four-year term by voters in the countywide area. Chapter 125.01 of the Florida Statutes establishes the specific duties and powers of the Board of County Commissioners. Exercising their legislative powers, the County Commission adopts ordinances (local laws) and resolutions to establish policies and programs to protect the health, safety and general welfare of Martin County residents.

This document may be reproduced upon request in an alternative format by contacting the County ADA Coordinator (772) 320-3131, the County Administration Office (772) 288-5400, Florida Relay 711, or by completing our accessibility feedback form at [www.martin.fl.us/accessibility-feedback](http://www.martin.fl.us/accessibility-feedback)



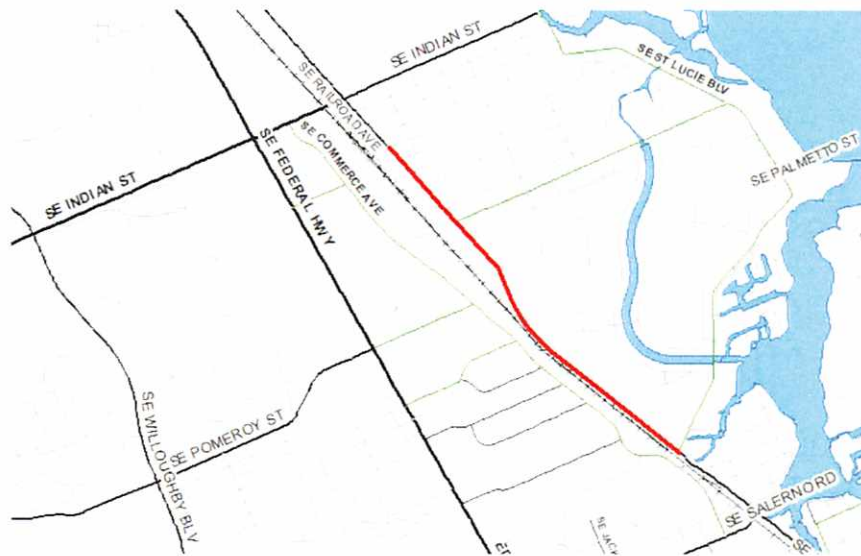
FOR IMMEDIATE RELEASE

## SE Dixie Highway – Lane Closure -REVISED

On Wednesday, October 26<sup>th</sup>, A-Tech Plus Inc will begin work on the directional boring on SE Dixie Highway. This will necessitate a lane closure on SE Dixie Highway between SE Railroad Avenue to SE Saint Lucie Boulevard. This work is anticipated to be complete by November 4<sup>th</sup>.

Motorists are encouraged to follow detours, exercise caution, and expect delays.

The Martin County Road Conditions Map is available via any mobile device or desktop with internet access. To view all county lane/road closures, visit: <http://conezone.martin.fl.us>.



(MP/PWD)

Residents are encouraged to visit [www.martin.fl.us](http://www.martin.fl.us), Martin County's online resource for services, news and information, and connect with us on social media. Follow us on [Twitter](#), [Facebook](#) and [Instagram](#) and subscribe to our [YouTube Channel](#).

###

Martha Ann Kneiss | Office of Communications  
Office: 772-463-2810 | Mobile: 772-214-2790 | [mkneiss@martin.fl.us](mailto:mkneiss@martin.fl.us)

Carol Higgins | Public Works Department  
772-288-5462 | [chiggins@martin.fl.us](mailto:chiggins@martin.fl.us)

### About the Martin County Board of County Commissioners

The five-member Board of County Commissioners is the legislative governing body of Martin County. Each Commissioner is elected to a four-year term by voters in the countywide area. Chapter 125.01 of the Florida Statutes establishes the specific duties and powers of the Board of County Commissioners. Exercising their legislative powers, the County Commission adopts ordinances (local laws) and resolutions to establish policies and programs to protect the health, safety, and general welfare of Martin County residents.

This document may be reproduced upon request in an alternative format by contacting the County ADA Coordinator (772) 320-3131, the County Administration Office (772) 288-5400, Florida Relay 711, or by completing our accessibility feedback form at [www.martin.fl.us/accessibility-feedback](http://www.martin.fl.us/accessibility-feedback).





FOR IMMEDIATE RELEASE

## SE Island Way – Lane and Sidewalk Closure

On Wednesday, October 26<sup>th</sup>, Pike Electric on behalf of Florida Power and Light will begin utility work on SE Island Way. This will necessitate a lane and sidewalk closure on SE Island Way between SE Jupiter River Road and SE Tortuga Court. This work is anticipated to be complete by November 23<sup>rd</sup>.

Motorists are encouraged to follow detours, exercise caution, and expect delays.

The Martin County Road Conditions Map is available via any mobile device or desktop with internet access. To view all county lane/road closures, visit: <http://conezone.martin.fl.us>.



(MP/PWD)

Residents are encouraged to visit [www.martin.fl.us](http://www.martin.fl.us), Martin County's online resource for services, news and information, and connect with us on social media. Follow us on [Twitter](#), [Facebook](#) and [Instagram](#) and subscribe to our [YouTube Channel](#).

###

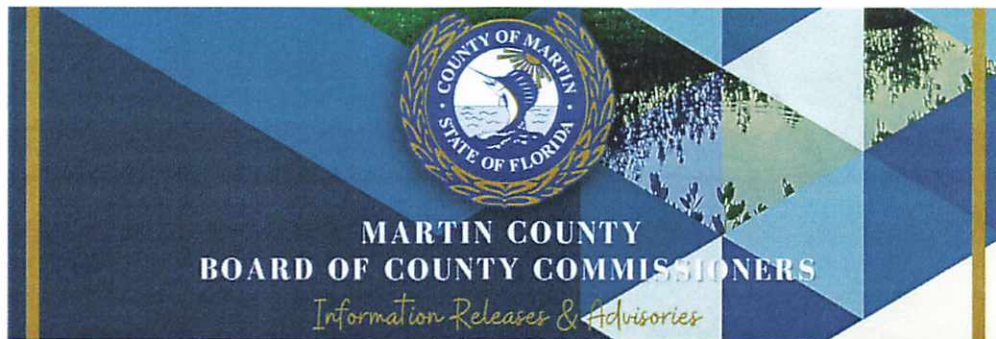
Martha Ann Kneiss | Office of Communications  
Office: 772-463-2810 | Mobile: 772-214-2790 | [mkneiss@martin.fl.us](mailto:mkneiss@martin.fl.us)

Susan Kingsley | Public Works Department  
772-288-5459 | [skingsley@martin.fl.us](mailto:skingsley@martin.fl.us)

### About the Martin County Board of County Commissioners

The five-member Board of County Commissioners is the legislative governing body of Martin County. Each Commissioner is elected to a four-year term by voters in the countywide area. Chapter 125.01 of the Florida Statutes establishes the specific duties and powers of the Board of County Commissioners. Exercising their legislative powers, the County Commission adopts ordinances (local laws) and resolutions to establish policies and programs to protect the health, safety and general welfare of Martin County residents.

This document may be reproduced upon request in an alternative format by contacting the County ADA Coordinator (772) 320-3131, the County Administration Office (772) 288-5400, Florida Relay 711, or by completing our accessibility feedback form at [www.martin.fl.us/accessibility-feedback](http://www.martin.fl.us/accessibility-feedback)



FOR IMMEDIATE RELEASE

## South Fork High School Homecoming Parade Road Closures

Starting at 2:00 pm on Wednesday, October 26<sup>th</sup>, South Fork High School will host their annual homecoming parade. This event will necessitate a road closure on SE Dixie Highway from SE Olympus Street East to SE Bridge Road, and along SE Bridge Road from SE Hercules Avenue to SE Dixie Highway. The event is anticipated to be complete by 8:00 pm.

Motorists are encouraged to follow detours, exercise caution, and expect delays.

The Martin County Road Conditions Map is available via any mobile device or desktop with internet access. To view all county lane/road closures, visit: <http://conezone.martin.fl.us>.



(MP/PWD)

Residents are encouraged to visit [www.martin.fl.us](http://www.martin.fl.us), Martin County's online resource for services, news and information, and connect with us on social media. Follow us on [Twitter](#), [Facebook](#) and [Instagram](#) and subscribe to our [YouTube Channel](#).

###

Martha Ann Kneiss | Office of Communications  
Office: 772-463-2810 | Mobile: 772-214-2790 | [mkneiss@martin.fl.us](mailto:mkneiss@martin.fl.us)

Melissa Pulver | Public Works Department  
772-288-5466 | [mpulver@martin.fl.us](mailto:mpulver@martin.fl.us)

### About the Martin County Board of County Commissioners

The five-member Board of County Commissioners is the legislative governing body of Martin County. Each Commissioner is elected to a four-year term by voters in the countywide area. Chapter 125.01 of the Florida Statutes establishes the specific duties and powers of the Board of County Commissioners. Exercising their legislative powers, the County Commission adopts ordinances (local laws) and resolutions to establish policies and programs to protect the health, safety and general welfare of Martin County residents.

This document may be reproduced upon request in an alternative format by contacting the County ADA Coordinator (772) 320-3131, the County Administration Office (772) 288-5400, Florida Relay 711, or by completing our accessibility feedback form at [www.martin.fl.us/accessibility-feedback](http://www.martin.fl.us/accessibility-feedback)