



FOR IMMEDIATE RELEASE

NE Bayberry Lane – Lane Closure – REVISED

On Thursday, September 22nd, the Martin County Public Works Department will finish road work on NE Bayberry Lane. This will necessitate intermittent lane closures from NE Pinecrest Lakes Boulevard to NE Town Terrace starting at 9:00 AM to 2:00 PM. This work is anticipated to be complete by September 22nd.

Motorists are encouraged to follow detours, exercise caution, and expect delays.

The Martin County Road Conditions Map is available via any mobile device or desktop with internet access. To view all county lane/road closures, visit: <http://conezone.martin.fl.us>.



(MP/PWD)

Residents are encouraged to visit www.martin.fl.us, Martin County's online resource for services, news and information, and connect with us on social media. Follow us on [Twitter](#), [Facebook](#) and [Instagram](#) and subscribe to our [YouTube Channel](#).

###

Martha Ann Kneiss | Office of Communications
Office: 772-463-2810 | Mobile: 772-214-2790 | mkneiss@martin.fl.us

Nicolas Muzia | Public Works Department
772-288-5761 | nmuzia@martin.fl.us

About the Martin County Board of County Commissioners

The five-member Board of County Commissioners is the legislative governing body of Martin County. Each Commissioner is elected to a four-year term by voters in the countywide area. Chapter 125.01 of the Florida Statutes establishes the specific duties and powers of the Board of County Commissioners. Exercising their legislative powers, the County Commission adopts ordinances (local laws) and resolutions to establish policies and programs to protect the health, safety and general welfare of Martin County residents.

This document may be reproduced upon request in an alternative format by contacting the County ADA Coordinator (772) 320-3131, the County Administration Office (772) 288-5400, Florida Relay 711, or by completing our accessibility feedback form at www.martin.fl.us/accessibility-feedback.



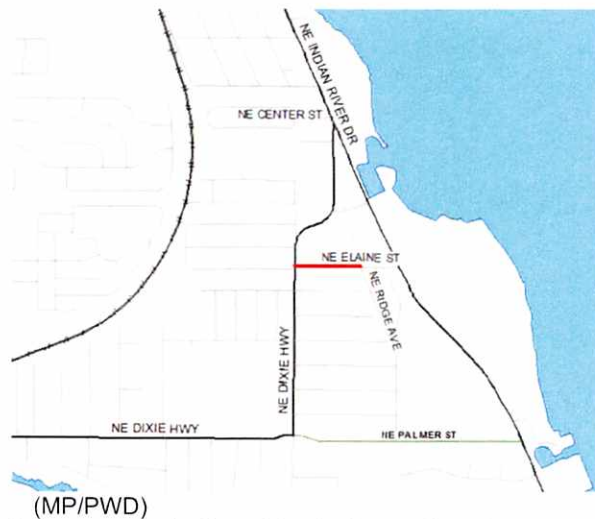
FOR IMMEDIATE RELEASE

NE Elaine Street – Lane Closure - REVISED

On Thursday, September 22nd, the Martin County Public Works Department will begin road work maintenance on NE Elaine Street. This will necessitate intermittent lane closures from NE Dixie Highway to NE Ridge Avenue between the hours of 9:00 AM to 2:00 PM. This work is anticipated to be complete by September 22nd.

Motorists are encouraged to follow detours, exercise caution, and expect delays.

The Martin County Road Conditions Map is available via any mobile device or desktop with internet access. To view all county lane/road closures, visit: <http://conezone.martin.fl.us>



Residents are encouraged to visit www.martin.fl.us, Martin County's online resource for services, news and information, and connect with us on social media. Follow us on [Twitter](#), [Facebook](#) and [Instagram](#) and subscribe to our [YouTube Channel](#).

###

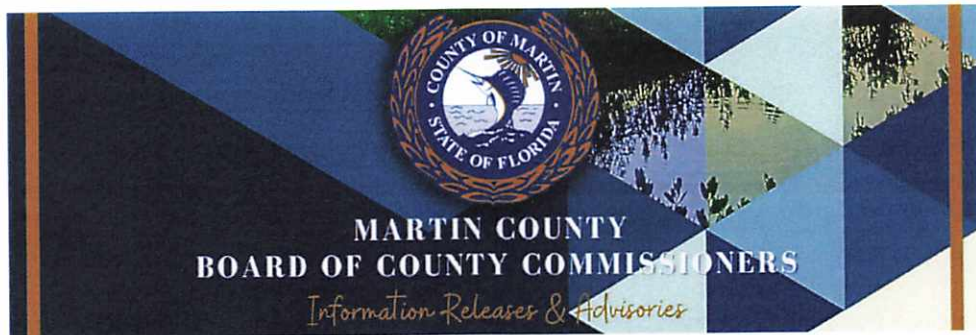
Martha Ann Kneiss | Office of Communications
Office: 772-463-2810 | Mobile: 772-214-2790 | mknkneiss@martin.fl.us

Nicolas Muzia | Public Works Department
772-288-5761 | nmuzia@martin.fl.us

About the Martin County Board of County Commissioners

The five-member Board of County Commissioners is the legislative governing body of Martin County. Each Commissioner is elected to a four-year term by voters in the countywide area. Chapter 125.01 of the Florida Statutes establishes the specific duties and powers of the Board of County Commissioners. Exercising their legislative powers, the County Commission adopts ordinances (local laws) and resolutions to establish policies and programs to protect the health, safety and general welfare of Martin County residents.

This document may be reproduced upon request in an alternative format by contacting the County ADA Coordinator (772) 320-3131, the County Administration Office (772) 288-5400, Florida Relay 711, or by completing our accessibility feedback form at www.martin.fl.us/accessibility-feedback.



FOR IMMEDIATE RELEASE

SE Indian Street – Intermittent Lane Closures - REVISED

On Thursday, September 22nd, HSR Constructors will finish final signal work on SE Indian Street at the railroad crossing. This will necessitate intermittent lane closures from SE Commerce Avenue to SE Dixie Highway between the hours of 9:00 AM to 2:00 PM. This work is anticipated to be complete by September 22nd.

Motorists are encouraged to follow detours, exercise caution, and expect delays.

The Martin County Road Conditions Map is available via any mobile device or desktop with internet access. To view all county lane/road closures, visit: <http://conezone.martin.fl.us>.



(MP/PWD)

Residents are encouraged to visit www.martin.fl.us, Martin County's online resource for services, news and information, and connect with us on social media. Follow us on [Twitter](#), [Facebook](#) and [Instagram](#) and subscribe to our [YouTube Channel](#).

###

Martha Ann Kneiss | Office of Communications
Office: 772-463-2810 | Mobile: 772-214-2790 | mkneiss@martin.fl.us

Nicholas Muzia | Public Works Department
772-288-5761 | nmuzia@martin.fl.us

About the Martin County Board of County Commissioners

The five-member Board of County Commissioners is the legislative governing body of Martin County. Each Commissioner is elected to a four-year term by voters in the countywide area. Chapter 125.01 of the Florida Statutes establishes the specific duties and powers of the Board of County Commissioners. Exercising their legislative powers, the County Commission adopts ordinances (local laws) and resolutions to establish policies and programs to protect the health, safety and general welfare of Martin County residents.

This document may be reproduced upon request in an alternative format by contacting the County ADA Coordinator (772) 320-3131, the County Administration Office (772) 288-5400, Florida Relay 711, or by completing our accessibility feedback form at www.martin.fl.us/accessibility-feedback.